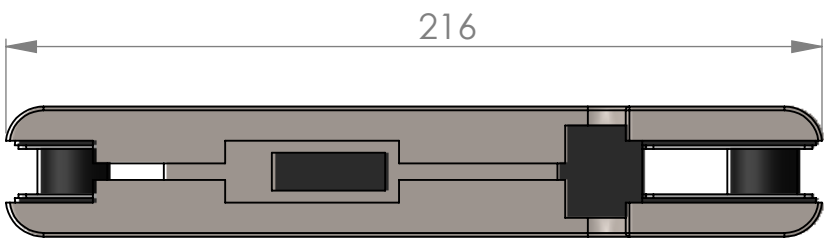


Product Specification Sheet

Patches | Retailia Side/Overpanel Strike



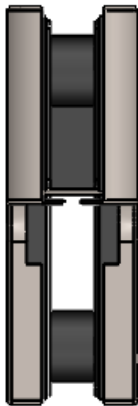
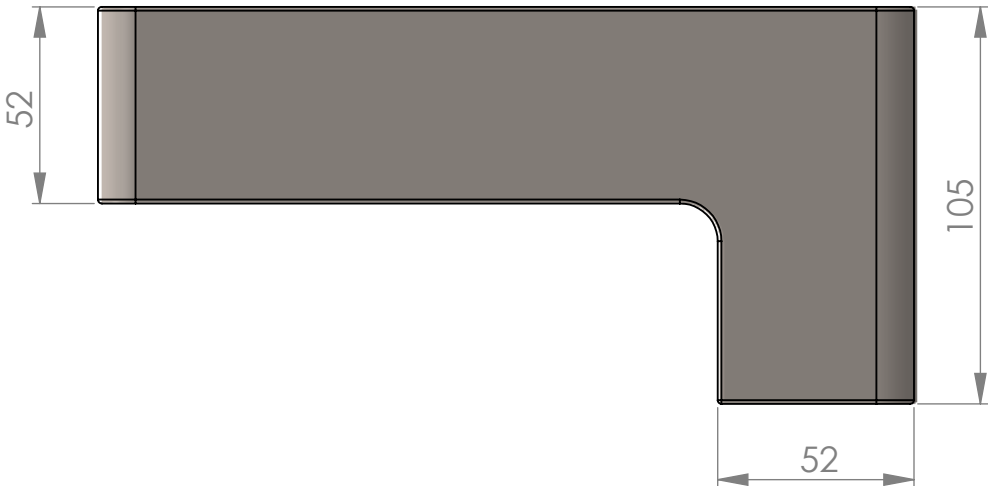
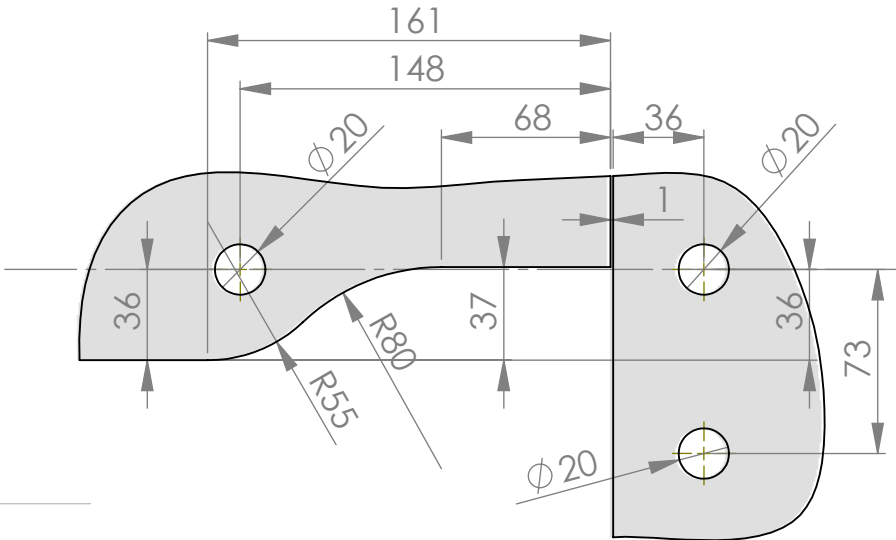
Sheet Notes

- All dimensions are in mm unless otherwise stated
- Any dimensions scaled from this drawing are taken at readers own risk

Product Key Features

Material Finish: Brushed/Polished Stainless Steel Grade 304
Handing: Non Handed
Packaging: 1no.

Glass Preparation Details
Scale 1:3



01483 568287 | 01483 540830
enquiries@vistaglassproducts.com

PRODUCT NAME.	PART NO.
Side/Overpanel Strike	GOR.100C
DRAWING	

SCALE: 1:1 SHEET SIZE: A3 DRAWN BY: BK CHECKED BY: MJ DATE: 20/05/13
PROJECT NO. DRAWING NO.